

ALEXGROUT BPL



High Performance Flowing Epoxy Resin Grout

Description

ALEXGROUT BPL is three components solvent free epoxy resin grout formulated to withstand Static and dynamic loads in a wide variety of applications. Easily mixed on site to pourable consistency.

Uses

- To fill gaps in concrete structure.
- Steel columns for warehouses
- Concrete area subject to chemical attacks.
- Under machines, equipment grout.
- Grout around anchor bolts, brackets, fixing bolts.
- Grout under steel columns, base plates in warehouses and storage areas.
- Dynamic crane rails (vibrated or high loads)

Advantages

- Resist Dynamic load.
- Non primer required
- High tensile, flexural and compressive Strength
- Solvent
- Non shrink
- Chemical attack resistance.
- High bond between concrete and steel Surface.
- High mechanical and physical properties.

Surface preparation

All surfaces must be sound, clean free from water Oil ,grease and other contaminants which may Affect the bond between grout and the substrate.

Properties

Colour	grey	
Pot life	AT 25°C	50 min
Density		2100kg/m ³
Full chemical cure	AT 25°C	7 days
	AT 40°C	3 days
Compressive strength	24 hrs	80N/mm ²

Guide to application

Mixing:

Add component B (Hardener) to component A (Base) and mix by using low speed drill (250 r.p.m) till reach the homogeneity.

During mixing A&B add the third component (C) aggregate to the mixed compound gradually (part by part).

After reaching the homogeneity for the three components, still mix the mixture for at least 3 minutes.

Standard:

Compressive strength

ASTM D-695

Tensile strength

ASTM D-638

Flexural strength

ASTM C-293

Bond strength (14 days cure)

ASTM C-882

Water absorption

ASTM D-570

Elongation at break

ASTM D-638

Linear coefficient of shrinkage

On curing

ASTM C-844

Heat Deflection Temperature

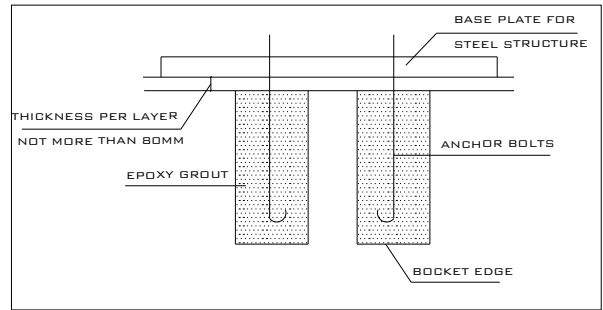
ASTM D-648

Coefficient of thermal Expansion

ASTM C-580

Application:

- Self leveling grout normally no need for using vibrator.
- In large quantity use a thin rod vibrator.
- Pour the grout from one side using head to reach a continuous flow.
- Pour in single application with a maximum depth of 60 mm, for application deeper than 60 mm pour in lift of maximum depth 60mm, confirm the sealed shuttering.



Coverage:

21 Kg of **ALEXGROUT BPL** will yield 10.5 lit.

Storage:

Store under cover, out of direct sun And protect from extremes of temperature, in tropical climates, the product must be Stored in an air-conditioned environment Failure to comply with the recommended Storage conditions may result in premature Deterioration of the product or packing.

Packing:

Is supplied in 21kg.

Shelf life:

Up to 12 months if stored in unopened Containers according to the manufactured Instructions

Safety precautions:

Avoid contact with eyes, mouth, and skin.

Treat splashes to skin and eyes immediately,

If accidentally ingested seek medical attention.

Re-seal containers after use.

Guarantee:

All precaution is taken in manufacture of each product to comply with the standard of each material.

The data sheet for each product for information only and may be corrected and no liability is accepted for it.

The results may have variation because the method of their use condition under which they are applied cannot be anticipated.

Technical Service:

For any technical advice for using the **ALEXCHEM** contact the technical office.

HEAD OFFICE:

33 Elamgad St, Miami, Alexandria

www.alexchem.net

info@alexchem.net

Tel/Fax: +203-5566791

Mob: +20173745566

FACTORY:

ELNahda, Karnak-Amraya

Tel: +203-٩٦٨٠٨٢٨

Fax: +203-٩٦٨٠٨30